

SAMPLE COOLERS SC32P – SC32PP

DESCRIPTION

ADCA sample coolers are specially designed to cool samples of boiler water or steam for analysis.

Sample coolers prevent steam flashing-off from hot pressurised liquid samples, which can be dangerous and will result in an incorrect water sample.

This device may be used for boiler water analysis and other sampling or cooling applications compatible with the construction materials.

MAIN FEATURES

Corrosion-resistant body and internals.

Self draining sample (inlet top, outlet bottom).

Surface finish of sample tubes internal area : 0,5 µm Ra.

OPTIONS: Different connection sizes and materials under request against extra price.
Polished shell

USE: Steam boilers.
Hot water systems.

AVAILABLE MODELS: SC32P – permanent sampling
SC32PP – portable design

SIZES AND CONNECTIONS : Cooling water inlet/outlet : 1/2" on body (BSP or NPT)
or DN 3/4" tri-clamp
Sample tube inlet/outlet : 8 mm O/D
Alternative DN 1/2" tri-clamp compatible

INSTALLATION: Vertical installation.

OPERATION: Cooling water must be in it's maximum flow before open or close the sample inlet valve, in order to avoid the risk of scalding .
The sample valve must also be closed before the cooling water valve.

PERFORMANCE: 30 to 60 kg/hr of sample water at ≈ 30°C with 1m³/h -15°C inlet cooling water (boilers up to 20 bar-220°C), for other pressures, temperatures and /or certified figures please consult.



LIMITING CONDITIONS				
Model	BODY		COIL	
	Pressure bar	Related Temp. °C	* Pressure bar	* Related Temp. °C
SC32P - SC32PP	20	120	110	400
			90	450

* Limited to the clamp adaptor rating

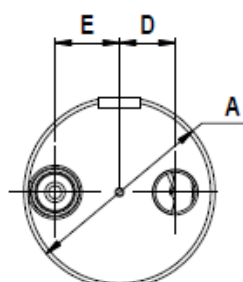
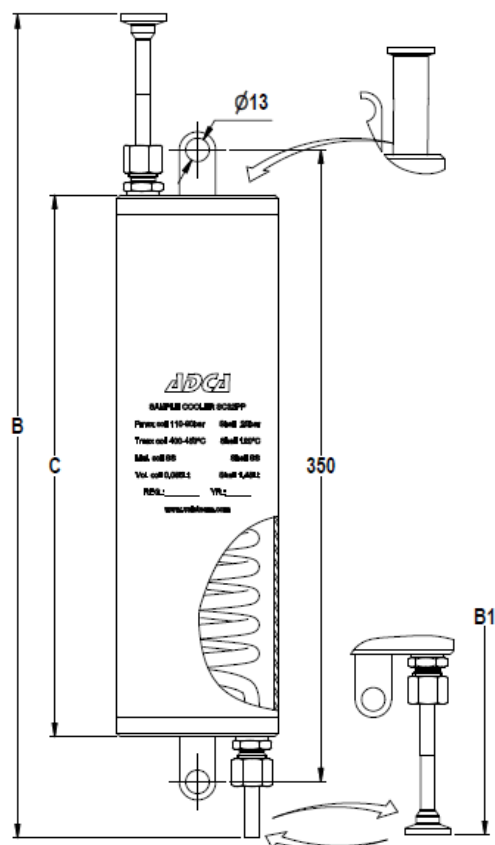
Minimum operating temperature : -10°C

MATERIALS	
DESIGNATION	MATERIAL
Body	AISI 316L / 1.4404
Covers	AISI 316L / 1.4404
Coil	AISI 316L / 1.4404
Compression fittings	AISI 316Ti / 1.4571 Cl. L
Discharge tube	ASI 316L / 1.4404

EN10204 3.1 certificate and internal coil surface finish certification available if requested with the order

DIMENSIONS (mm)									
MODEL	A	B	B1	C	D	E	F	G	WGT Kg
SC 32P	90	456	500	300	26	30	/	/	3,3
SC 32PP	90	684	160	324	136	30	194	275*	5,9

* Extended legs on request

SC 32P

SC 32PP
